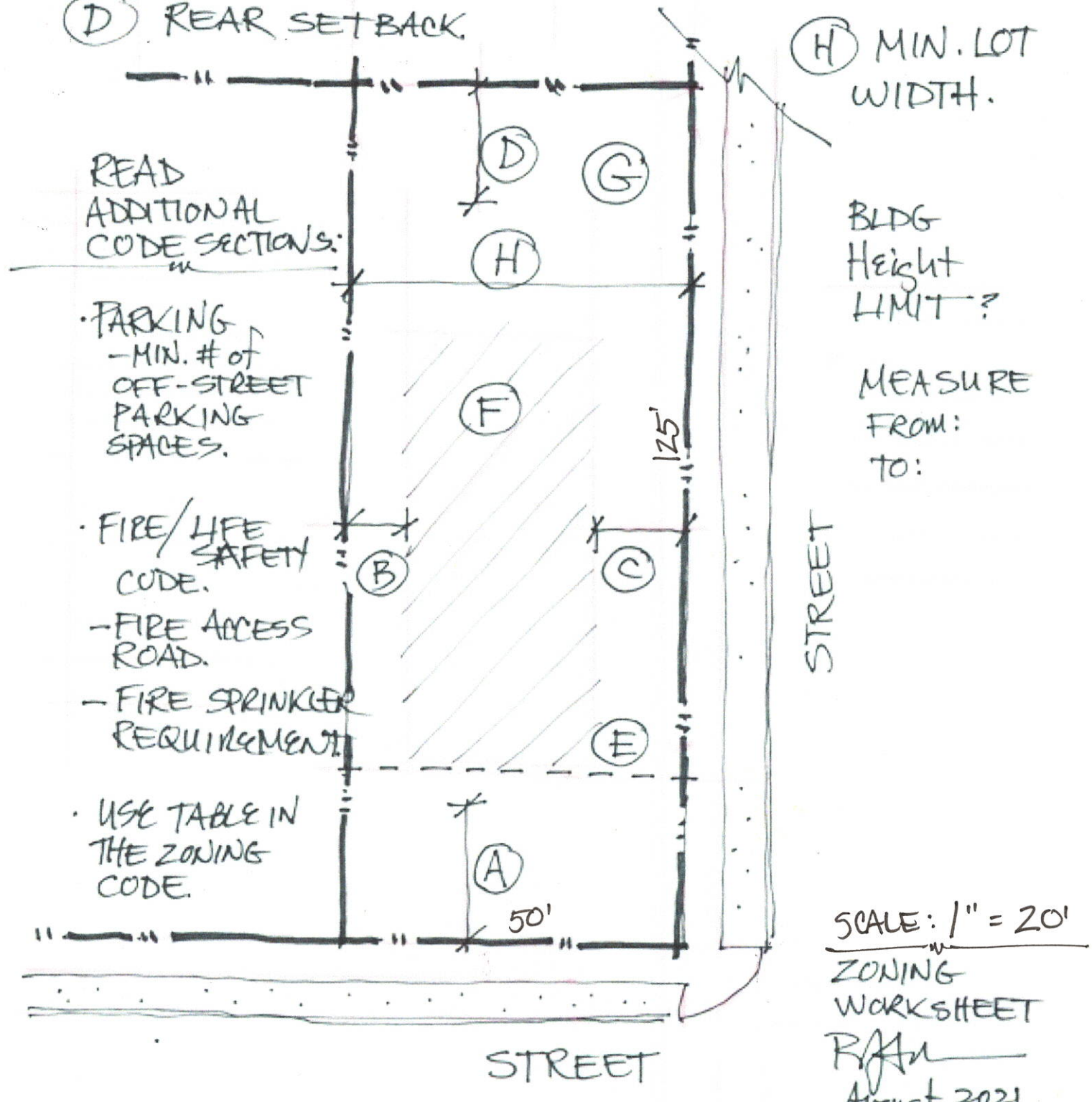
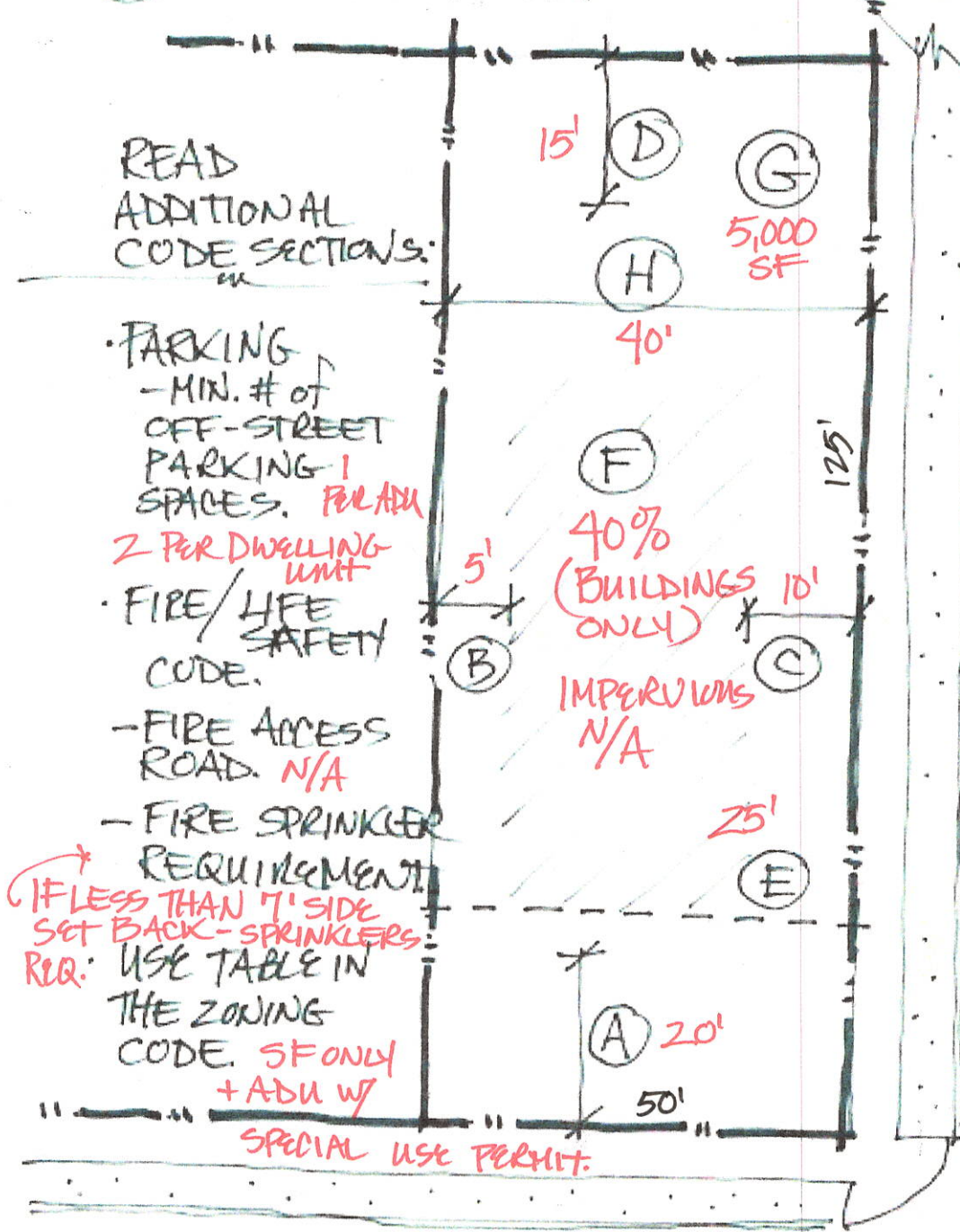


- (A) FRONT SETBACK.
- (B) SIDE SETBACK.
- (C) SIDE SETBACK STREET SIDE.
- (D) REAR SETBACK.
- (E) PARKING SETBACK.
- (F) TOTAL LOT COVERAGE.  
% IMPERVIOUS.
- (G) MIN. LOT AREA.
- (H) MIN. LOT WIDTH.



□ KEY NOTE: READ THE "DEFINITIONS" SECTION 2X.

- (A) FRONT SETBACK.
- (B) SIDE SETBACK.
- (C) SIDE SETBACK STREET SIDE.
- (D) REAR SETBACK.
- (E) PARKING SETBACK.
- (F) TOTAL LOT COVERAGE.  
% IMPERVIONS.
- (G) MIN. LOT AREA.
- (H) MIN. LOT WIDTH.



READ  
ADDITIONAL  
CODE SECTIONS:

- PARKING
  - MIN. # of OFF-STREET PARKING SPACES. *PER ADA 2 PER DWELLING UNIT*
- FIRE/LIFE SAFETY CODE.
  - FIRE ACCESS ROAD. *N/A*
  - FIRE SPRINKLER REQUIREMENT. *IF LESS THAN 7' SIDE SETBACK - SPRINKLERS REQ. USE TABLE IN THE ZONING CODE. SF ONLY + ADU w/*

BLDG Height *35'*  
LIMIT?

MEASURE FROM: *AVERAGE GRADE @ FND*

MIDPOINT of roof or top of Parapet for a Flat Roof

SCALE: 1" = 20'

ZONING WORKSHEET

RAA  
August 2021

DRIVEWAYS & PARKING STREET ALLOWED IN SIDE OR REAR SETBACKS.

KEY NOTE: READ THE "DEFINITIONS" SECTION 2X. ✓